

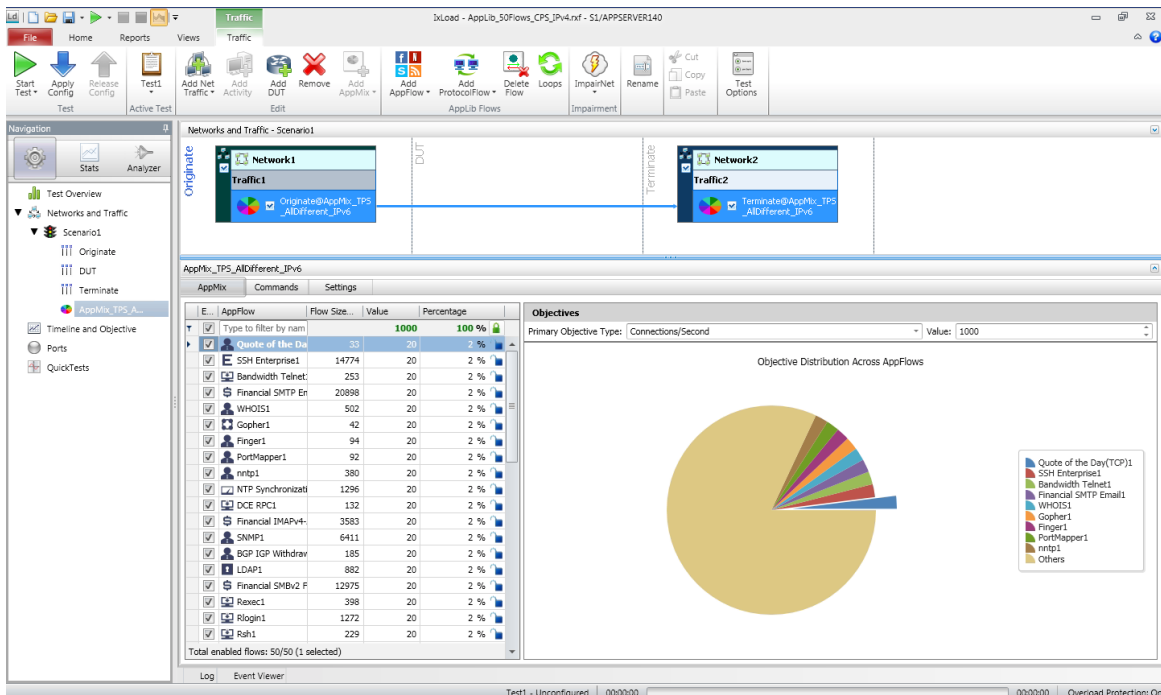
IxLoad™ AppLibrary: Application Intelligence for Realistic L4-7 Traffic



AppLibrary delivers:

- Simplified workflow for multi-application testing
- Deterministic multi-application performance distributions over emulated networks using the emulated hosts
- Extensive library of pre-defined applications flows to simulate end-user interactions and devices
- Comprehensive real-time analysis of per-flow statistics

IxLoad AppLibrary speeds and simplifies testing with a simplified workflow and framework that simulates application profiles. AppLibrary uses Ixia BreakingPoint Application Threat Intelligence (ATI) technology to provide an extensive library of pre-defined application flows that simulate end-user interactions and devices. The solution combines Ixia's IxLoad for protocol emulation and stateless traffic generation with the most current real-world stateful application simulations.



IxLoad AppLibrary Traffic Wizard

Key Benefits

- Simulate real-world traffic scenarios and user-defined combinations of application simulations, along with a per-application percentage of each application simulation
- Realistic traffic: packet payload dynamically changing in real-time, not just replay of a pre-recorded flow
- Simulate real-world traffic as though it was coming from thousands of real host computers over a live network
- Combined L2-3 and L4-7 traffic over the same ports
- A continually-expanding and updated library of pre-defined application flows; as application definitions are refined, so too is the library updated to reflect the new standards
- Review and compare statistics on a per-application flow and per-port basis
- NAT/PAT Support

Specifications

Application Simulations	700+, and growing monthly
Application Simulations per port	50
Ports Supported	144 1G ports and 96 10G ports
Traffic over Protocol Emulations	Subset; 802.1x and DHCP (RT2)
Supported Load Modules Include	<ul style="list-style-type: none"> • XMVDC Family <ul style="list-style-type: none"> ○ LSM1000XMVDC8 ○ LSM1000XMVDC12 ○ LSM1000XMVDC16 ○ LSM1000XMVDC4NG ○ LSM1000XMVDC16NG • NGY Family <ul style="list-style-type: none"> ○ NGY-NP2 ○ NGY-NP4 ○ NGY-NP8 • IxVM Family <ul style="list-style-type: none"> ○ IxVM Single NIC ○ IxVM Multi NIC • Xcellon Family <ul style="list-style-type: none"> ○ Xcellon-Ultra NP/NG ○ Xcellon-Ultra XT80 ○ Xcellon-Ultra XTS40 (unencrypted NICS only) • PerfectStorm Family <ul style="list-style-type: none"> ○ PerfectStorm 40GE ○ PerfectStorm 10GE • PerfectStorm ONE Family <ul style="list-style-type: none"> ○ PerfectStorm ONE 40GE ○ PerfectStorm ONE 10GE

Product Ordering Information

925-3461

IxLoad AppLibrary Slot Bundle, Enables support for AppLibrary on a single load module. It includes AppLibrary framework and subscription service to access new application flows for one year; Requires previous purchase of 925-3050 (IXLOAD Base) or higher bundle.

925-3463

IxLoad AppLibrary Chassis Bundle, Enables support for AppLibrary on up to 12 supported load modules in a single chassis. It includes AppLibrary framework and subscription service to access new application flows for one year on the entire chassis; Requires previous purchase of 925-3050 (IXLOAD Base) or higher bundle.

925-5461

IxLoad CPD-AppLibrary Bundle, Enables support for AppLibrary on a single Xcellon-Ultra appliance. It includes the AppLibrary framework and subscription service to access new application flows for one year; Requires previous purchase of 925-5001 (IXLOAD Base) or higher bundle.

909-5002

Subscription Renewal for AppLibrary on a single load module (925-3460 IxLoad AppLibrary Slot Subscription or 930-3460 IxNetwork AppLibrary Slot Subscription). It enables users to get access to new and updated application flows on a monthly basis during the subscription period.

909-5004

Subscription Renewal for AppLibrary Chassis Bundle (12 count bundle of 925-3460 IxLoad AppLibrary Slot Subscription or 930-3460 IxNetwork AppLibrary Slot Subscription). It enables users to get access to new and updated application flows on a monthly basis during the subscription period.

909-5003

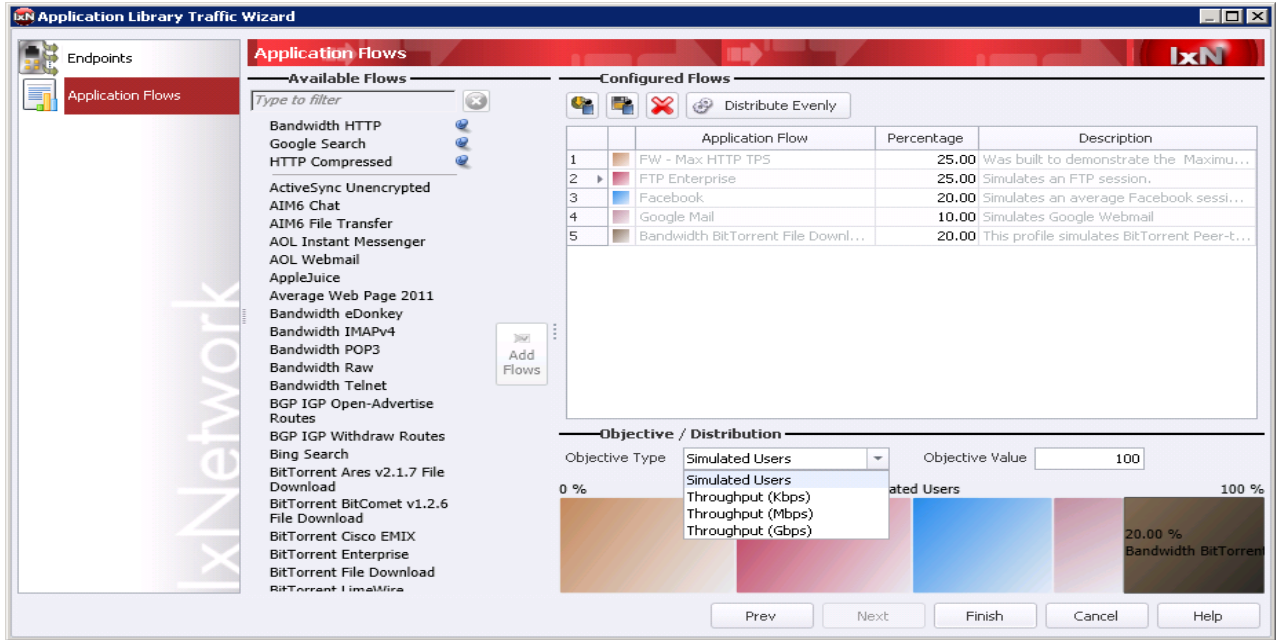
Subscription Renewal for CPD-AppLibrary on a single Xcellon-Ultra appliance (925-5460 IxLoad CPD-AppLibrary-Subscription). It enables users to get access to new and updated application flows on a monthly basis during the subscription period.

IxNetwork™ AppLibrary: Application Intelligence for Realistic L2-7 Traffic



- AppLibrary delivers:**
- Simplified workflow for multi-application testing
 - Deterministic multi-application performance distributions over emulated networks using the emulated hosts
 - Extensive library of pre-defined applications flows to simulate end-user interactions and devices
 - Comprehensive real-time analysis of per-flow statistics

IxNetwork AppLibrary speeds and simplifies testing with a simplified workflow and framework that simulates application profiles. AppLibrary uses Ixia BreakingPoint Application Threat Intelligence (ATI) technology to provide an extensive library of pre-defined application flows that simulate end-user interactions and devices. The solution combines Ixia’s IxNetwork for protocol emulation and stateless traffic generation with the most current real-world stateful application simulations.



Application Library Traffic Wizard

Key Benefits

- Simulate real-world traffic scenarios and user-defined combinations of application simulations, along with a per-application percentage of each application simulation
- Realistic traffic: packet payload dynamically changing in real-time, not just replay of a pre-recorded flow
- Simulate real-world traffic as though it was coming from thousands of real host computers over a live network
- Combined L2-3 and L4-7 traffic over the same ports
- A continually-expanding and updated library of pre-defined application flows; as application definitions are refined, so too is the library updated to reflect the new standards
- Review and compare statistics on a per-application flow and per-port basis
- NAT/PAT Support

Specifications

Application Simulations	300+, and growing monthly
Application Simulations per port	50
Ports Supported	128
Traffic over Protocol Emulations	Yes
Supported Load Modules	<ul style="list-style-type: none"> • XMVDC Family <ul style="list-style-type: none"> ○ LSM1000XMVDC8 ○ LSM1000XMVDC12 ○ LSM1000XMVDC16 ○ LSM1000XMVDC4NG ○ LSM1000XMVDC16NG • NGY Family <ul style="list-style-type: none"> ○ LSM10GXM2S ○ LSM10GXM4S ○ LSM10GXM8S ○ LSM10GXM2NG ○ LSM10GXM4NG ○ LSM10GXM8NG ○ LSM10GXM2S-NG ○ NGY-NP2 ○ NGY-NP4 ○ NGY-NP8

	<ul style="list-style-type: none">• IxVM Family<ul style="list-style-type: none">○ IxVM Single NIC○ IxVM Multi NIC• Xcellon Family<ul style="list-style-type: none">○ Xcellon-Flex AP 10G○ Xcellon-Flex AP Combo○ Xcellon-Multis CXP○ Xcellon-Multis QSFP○ Xcellon-Lava
--	---

Product Ordering Information

930-3461

IxNetwork AppLibrary Slot Bundle, Layer 4-7 Performance Test Application; Enables support for AppLibrary on a single supported load module. It includes the AppLibrary feature and subscription service to access new application flows for one year period. Requires previous purchase of 930-2056 (IxNetwork Base) or higher bundle.